

# Crime and Disorder, Partnership Response

Presentation for Rural and Communities Overview and  
Scrutiny Committee

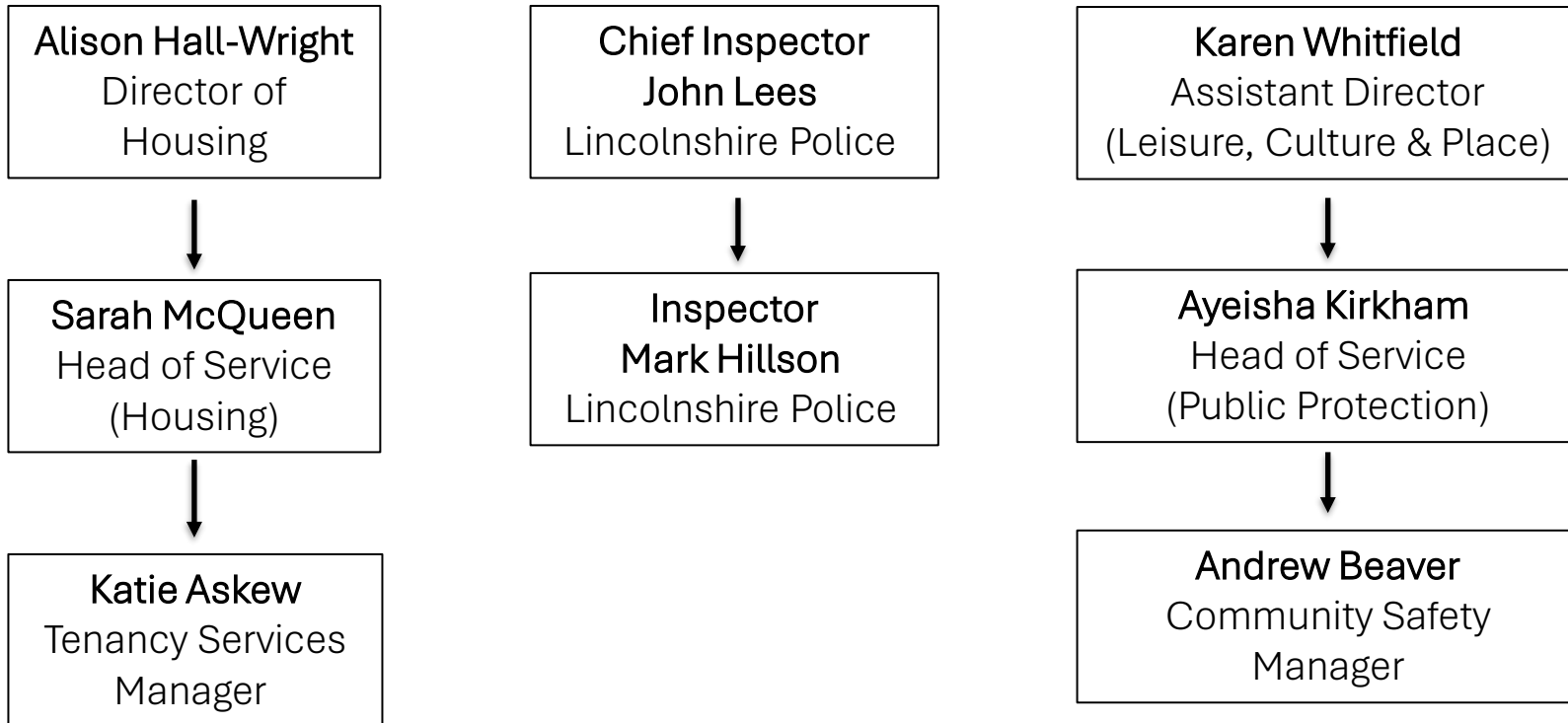


SOUTH  
KESTEVEN  
DISTRICT  
COUNCIL

# Key Officers – SKDC and Police



SOUTH  
KESTEVEN  
DISTRICT  
COUNCIL



SOUTH  
KESTEVEN  
DISTRICT  
COUNCIL

# Multi Agency Approach

Joint patrols and visits

Shared use of case management system

Effective use of CCTV Network

Joint working protocols

Partnership approach to target criminal activity within our communities

Attendance at a range of multi agency meetings:

**13**

SKDC/ Police Joint Agency Meeting (JAM)

**4**

Vulnerable Adults Panels (VAP)

**10**

Safety Advisory Group Meetings

**37**

Missing and Child Exploitation Meetings (MACE)

**13**

Anti Social Behavior Risk Assessment Conferences

**13**

NSK Communities and Partnership Meetings

**Quarterly**

SKDC/ Police Partnership Meetings



# Enforcement Actions

Enforcement Action	Cases
Unacceptable Behaviour Warning Letters (UBW1/UBW2)	44
Anti Social Behaviour Contacts (ABC)	4
Community Protection Notice Warning (CPNw)	118
Community Protection Notice (CPN)	12
Public Spaces Protection Order - FPNs	1
Closure Order - Full	10
Closure Order - Partial	2
Criminal Behaviour Order (CBO)	13
Notice to Quit (NTQ)	76
Notice of Seeking Possession (NOSP)	19



# Partnership Working in Practice

---



- MTC is a partnership case management and intelligence database. It is a secure and confidential way of sharing information across teams and the wider partnership.
- Multi-agency meetings are coordinated on MTC with the use of a tasking function to support accountability and ownership.
- MTC supports compliance with Standard Operating Procedures agreed by the Safer Lincolnshire Partnership.
- MTC enables seamless partnership working as both South Kesteven and the Police use this as the primary case management system for anti-social behaviour cases.



# Incremental Approach

---

**Anti-social Behaviour Crime and Policing Act 2014:** Provides a wide range of tools and powers that Police, local authorities and other agencies can use

- Includes civil and criminal remedies
  - Lincolnshire Young Person Protocol
  - Community Protection Warning (CPW) and Notice (CPN)
  - Injunction
  - Criminal Behaviour Order
  - Closure Order
  - Public Spaces Protection Order
- Promotes a victim focused and harm centred approach
- Used successfully by SKDC Housing, Neighbourhoods and the Police

## Policy

- Corporate Enforcement Policy (2026)
- ASB Landlord Services Policy



# Case Study 1 – Op Charges

An Environmental Crime investigation covering both South and North Kesteven District Council areas in relation to incidents of illegal commercial waste disposal.

SKDC's Neighbourhoods Team led the investigation and worked in partnership with multiple teams in Lincolnshire Police including Grantham NPT with intelligence and analytical support from the Force Intelligence Bureau.



# Case Study 1 – Op Charges



This was a 3-year investigation which resulted in convictions at Lincoln Crown Court;

Antony Doherty:

- 37 weeks custody suspended for 18 months.
- 100 hours unpaid work.

James Doherty:

- 51 weeks custody suspended for 18 months
- Costs
- 150 hours unpaid work.

Costs were also awards in excess of £54,000. This included investigation costs, legal costs and clearance costs.



## Case Study 2 - Safeguarding in the Community



SKDC Neighbourhoods Team were made aware of a property which was in a poor condition. Following unsuccessful attempts to gain entry to the property, working in partnership with Lincolnshire Police, a warrant was executed, enabling an inspection under the Public Health Act 1936 to be undertaken.

This case resulted in a multiagency approach including Lincolnshire Police, SKDC Neighbourhoods, SKDC Housing, LCC Children's Social Care and local schools.

The property was deemed to be filthy and unwholesome which resulted in the occupants being arrested for child cruelty offences and a notice being served requiring the property to be cleansed and sanitised.



## Case Study 2 - Safeguarding in the Community

---

Several children lived at the property and are subject to a Child Protection Plan. The family were relocated to temporary accommodation while the notice was complied with and have now returned home, with ongoing intensive support in place.

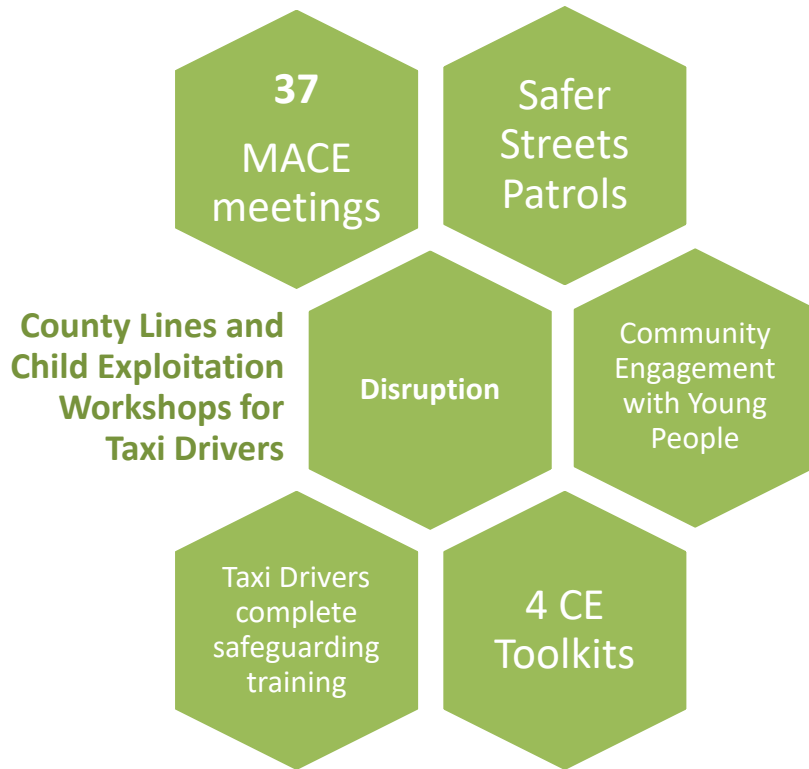


# Crime Data Overview

SOUTH KESTEVEN	Last Yr to Mar 25	This Yr to Mar 26	DIFF	% DIFF
VIOLENCE WITH INJURY	1020	941	-79	-7.7%
VIOLENCE WITHOUT INJURY	2163	2205	42	1.9%
PUBLIC DISORDER	690	619	-71	-10.3%
POSSESSION OF WEAPONS OFFENCES	63	51	-12	-19.0%
RAPE	171	155	-16	-9.4%
OTHER SEXUAL OFFENCES	272	259	-13	-4.8%
ROBBERY OF PERSONAL PROPERTY	50	45	-5	-10.0%
ROBBERY OF BUSINESS PROPERTY	7	20	13	185.7%
BURGLARY	379	309	-70	-18.5%
VEHICLE CRIME	475	449	-26	-5.5%
CRIMINAL DAMAGE	732	703	-29	-4.0%
ARSON	57	66	9	15.8%
SHOPLIFTING	960	852	-108	-11.3%
BICYCLE THEFT	93	65	-28	-30.1%
THEFT FROM THE PERSON	30	13	-17	-56.7%
ALL OTHER THEFT OFFENCES	628	566	-62	-9.9%
DRUG TRAFFICKING	72	60	-12	-16.7%
DRUG POSSESSION	116	115	-1	-0.9%
MISCELLANEOUS CRIMES AGAINST SOCIETY	275	291	16	5.8%
<b>Sum:</b>	<b>8253</b>	<b>7784</b>	<b>-469</b>	<b>-5.7%</b>



# Disrupting Child Exploitation



**Look  
closer**



**Exploited children and young people don't always look vulnerable and may not act like victims.**



# CCTV

New state-of-the-art, full-fibre digital CCTV control room in Grantham Police Station is now operational and has been successfully audited and verified against the Surveillance Camera Code of Practice and British Standards.



**10,903**

Total  
Incidents  
FY25/26

**305**  
Total  
Arrests

**196**  
Public  
Order

**437**  
ASB

**11**  
Weapons

**15**  
Criminal  
Damage



# CCTV – National Award Winners!!

---



The CCTV team has received a national award for its outstanding commitment and contribution to helping residents and businesses feel safer.

The award was presented at the National CCTV Conference 2026, jointly hosted by the National Police Chiefs' Council and the Public CCTV Managers' Association.



**Thank you for listening**



SOUTH  
KESTEVEN  
DISTRICT  
COUNCIL